



Meadows House, Chelsea Creek  
Fulham SW6

GARTON JONES.COM



GARTON JONES  
LONDON

# Meadows House, Chelsea Creek Fulham, SW6

GARTON JONES.COM

13 Park Street  
Chelsea Creek  
London  
SW6 2FS

Sales +44 (0) 20 7824 7090  
paul@gartonjones.com  
www.gartonjones.com

## £1,850,000 Leasehold

Spacious Three-Bedroom Apartment with Balcony — Chelsea Creek

Located within the prestigious Chelsea Creek development by Berkeley St George, this beautifully presented three-bedroom apartment offers 1,643 sq ft (152 sq m) of high-specification living in a tranquil canal-side setting.

The heart of the home is a bright open-plan living and dining area, featuring a sleek modern kitchen with integrated Miele appliances and direct access to a private balcony. All three bedrooms are generously proportioned, with two en suites and a luxury guest bathroom completing the accommodation.

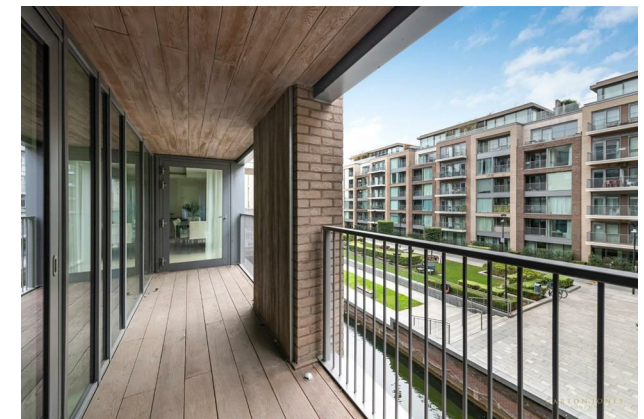
Residents enjoy access to a 24-hour concierge, spa and gym facilities, and landscaped gardens. The development is securely located near Imperial Wharf Overground and is within walking distance of the King's Road and Fulham Broadway, offering excellent dining, shopping, and transport options.

An exceptional opportunity to secure a luxury riverside apartment with premium finishes in one of West London's most sought-after developments.

Service Charge - £14,753.42  
Ground Rent - £750  
Lease 999 years from 1st June 2010

Council Tax — London Borough Of Hammersmith & Fulham  
Council Band H  
EPC C (77)

- Stunning Three Bedroom Lateral Apartment
- 1643sqft (152.67sqm)
- Second Floor
- Idyllic Dockside Location
- Beautiful Open Plan Lounge — Kitchen Area
- Integrated Miele Appliances
- Balcony
- 24 Hour Concierge
- Residents Spa — Gym & Swimming Pool
- Right To Park

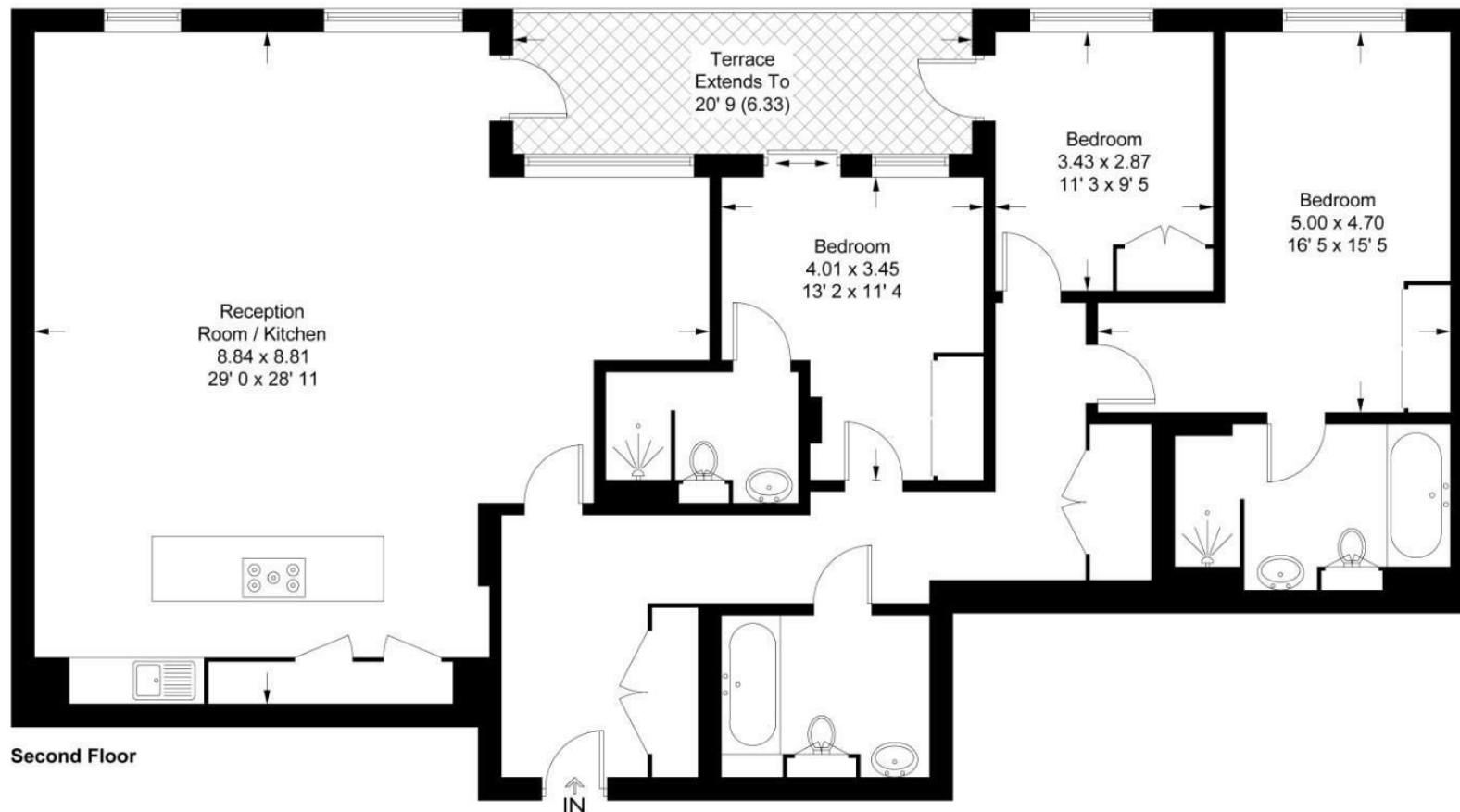


EPC certificate available on request.

## Meadows House

Approximate Gross Internal Area = 1587 sq ft / 147.4 sq m

GARTON JONES  
LONDON



This plan is not to scale and must be used as layout guidance only. All measurements and areas are approximate and should not be relied upon to provide accurate information. This plan must not be relied upon when making property valuations, design considerations or any other such relevant decisions. We accept no responsibility or liability (whether in contract, tort or otherwise) in relation to any loss whatsoever arising from or in connection with any use of this plan or the adequacy, accuracy or completeness of it or any information within it.





